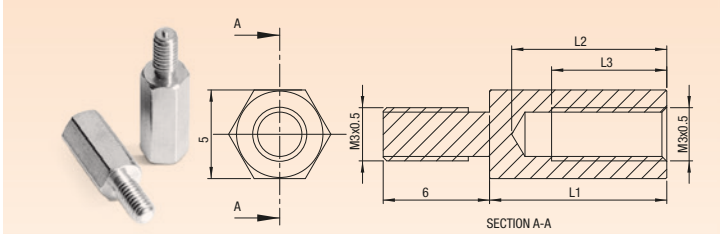
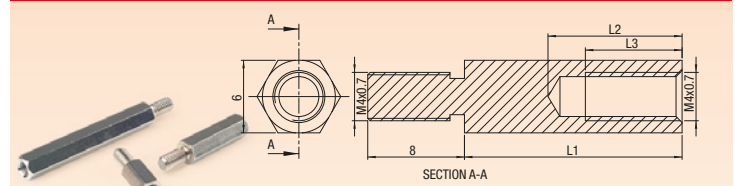


MALE-FEMALE M3 BRASS SPACERS



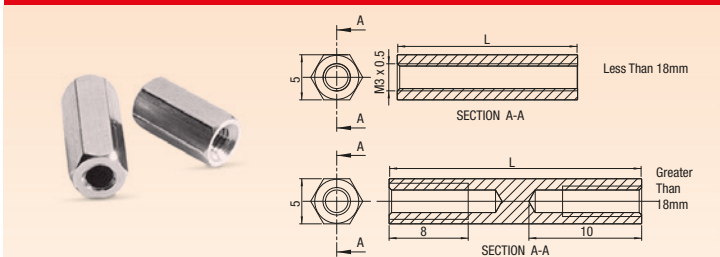
Code	L1	L2	L3	Pack	Code	L1	L2	L3	Pack
YP-505	5	4,5	3,5	50	YP-516	16	12	8	50
YP-506	6	5,5	4	50	YP-517	17	12	8	50
YP-507	7	6,5	5,5	50	YP-518	18	12	8	50
YP-508	8	7,5	6,5	50	YP-519	19	12	8	50
YP-509	9	8,5	7,5	50	YP-520	20	12	8	50
YP-510	10	9,5	8	50	YP-525	25	12	8	50
YP-511	11	10	8	50	YP-530	30	12	8	50
YP-512	12	11	8	50	YP-535	35	12	8	50
YP-513	13	12	8	50	YP-540	40	12	8	50
YP-514	14	12	8	50	YP-545	45	12	8	50
YP-515	15	12	8	50	YP-550	50	12	8	50

MALE-FEMALE M4 BRASS SPACERS



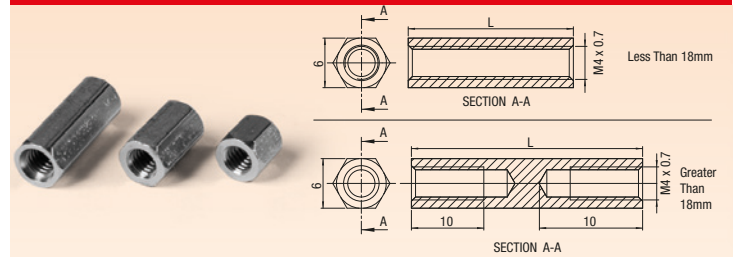
Code	L1	L2	L3	Pack	Code	L1	L2	L3	Pack
YP-4106	6	5,3	4	50	YP-4117	17	12	10	50
YP-4107	7	6,3	5	50	YP-4118	18	12	10	50
YP-4108	8	7,3	6	50	YP-4119	19	12	10	50
YP-4109	9	8,3	7	50	YP-4120	20	12	10	50
YP-4110	10	9,3	8	50	YP-4125	25	12	10	50
YP-4111	11	10,3	8	50	YP-4130	30	12	10	50
YP-4112	12	10,8	10	50	YP-4135	35	12	10	50
YP-4113	13	12	10	50	YP-4140	40	12	10	50
YP-4114	14	12	10	50	YP-4146	46	12	10	50
YP-4115	15	12	10	50	YP-4163	63	12	10	50
YP-4116	16	12	10	50					

FEMALE-FEMALE M3 BRASS SPACERS



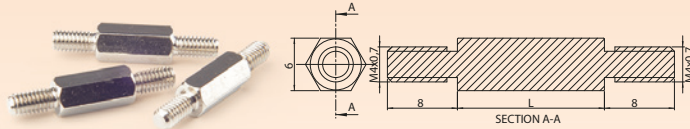
Code	L	Pack	Code	L	Pack
YP-405	5	50	YP-416	16	50
YP-406	6	50	YP-417	17	50
YP-407	7	50	YP-418	18	50
YP-408	8	50	YP-419	19	50
YP-409	9	50	YP-420	20	50
YP-410	10	50	YP-425	25	50
YP-411	11	50	YP-426	26	50
YP-412	12	50	YP-430	30	50
YP-413	13	50	YP-436	36	50
YP-414	14	50	YP-440	40	50
YP-415	15	50			

FEMALE-FEMALE M4 BRASS SPACERS



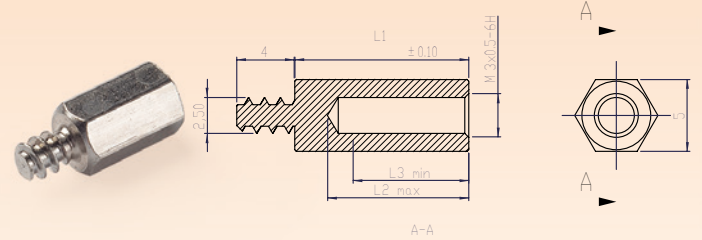
Code	L	Pack	Code	L	Pack
YP-4005	5	50	YP-4016	16	50
YP-4006	6	50	YP-4017	17	50
YP-4007	7	50	YP-4018	18	50
YP-4008	8	50	YP-4019	19	50
YP-4009	9	50	YP-4020	20	50
YP-4010	10	50	YP-4025	25	50
YP-4011	11	50	YP-4026	26	50
YP-4012	12	50	YP-4030	30	50
YP-4013	13	50	YP-4036	36	50
YP-4014	14	50	YP-4040	40	50
YP-4015	15	50			

MALE-MALE M4 BRASS SPACERS



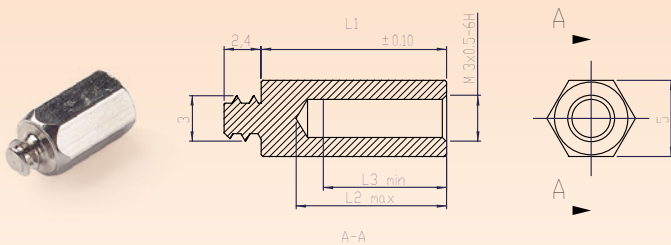
Code	L	Pack	Code	L	Pack
YP-4205	5	50	YP-4215	15	50
YP-4206	6	50	YP-4216	16	50
YP-4207	7	50	YP-4217	17	50
YP-4208	8	50	YP-4218	18	50
YP-4209	9	50	YP-4219	19	50
YP-4210	10	50	YP-4220	20	50
YP-4211	11	50	YP-4225	25	50
YP-4212	12	50	YP-4230	30	50
YP-4213	13	50	YP-4235	35	50
YP-4214	14	50	YP-4240	40	50

MALE-FEMALE PLASTIC THREADED SPACERS



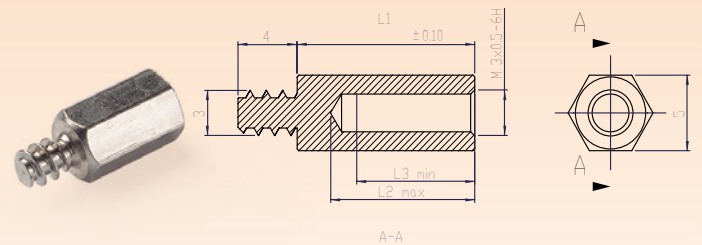
Code	L1	L2	L3	Pack
YP-3205	5	4,5	3,5	50
YP-3206	6	5,5	5	50
YP-3207	7	6,5	6	50
YP-3208	8	7,5	7	50
YP-3209	9	8,5	7,5	50
YP-3210	10	9,5	8	50
YP-3211	11	10	8	50
YP-3212	12	11	8	50

MALE-FEMALE PLASTIC THREADED SPACERS



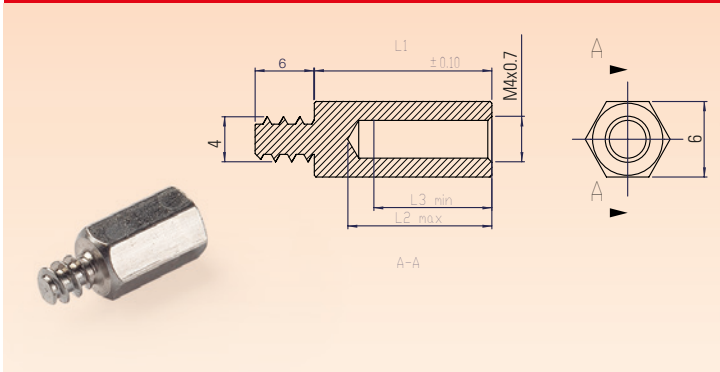
Code	L1	L2	L3	Pack
YP-3305	5	4,5	3,5	50
YP-3306	6	5,5	5	50
YP-3307	7	6,5	6	50
YP-3308	8	7,5	7	50
YP-3309	9	8,5	7,5	50
YP-3310	10	9,5	8	50
YP-3311	11	10	8	50
YP-3312	12	11	8	50

MALE-FEMALE PLASTIC THREADED SPACERS



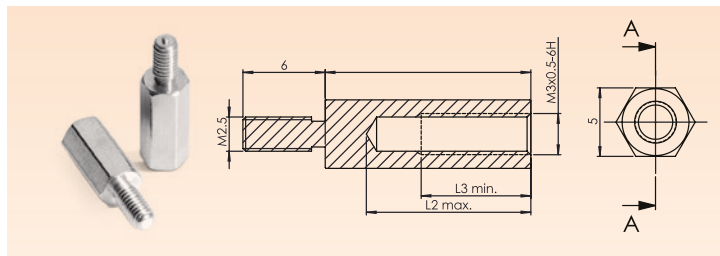
Code	L1	L2	L3	Pack	Code	L1	L2	L3	Pack
YP-3405	5	4,5	3,5	50	YP-3416	5	11	8	50
YP-3406	6	5,5	5	50	YP-3417	6	11	8	50
YP-3407	7	6,5	6	50	YP-3418	7	11	8	50
YP-3408	8	7,5	7	50	YP-3419	8	11	8	50
YP-3409	9	8,5	7,5	50	YP-3420	9	11	8	50
YP-3410	10	9,5	8	50	YP-3421	10	11	8	50
YP-3411	11	10	8	50	YP-3422	11	11	8	50
YP-3412	12	11	8	50	YP-3423	12	11	8	50
YP-3413	5	11	8	50	YP-3424	5	11	8	50
YP-3414	6	11	8	50	YP-3425	6	11	8	50
YP-3415	7	11	8	50					

MALE-FEMALE PLASTIC THREADED SPACERS



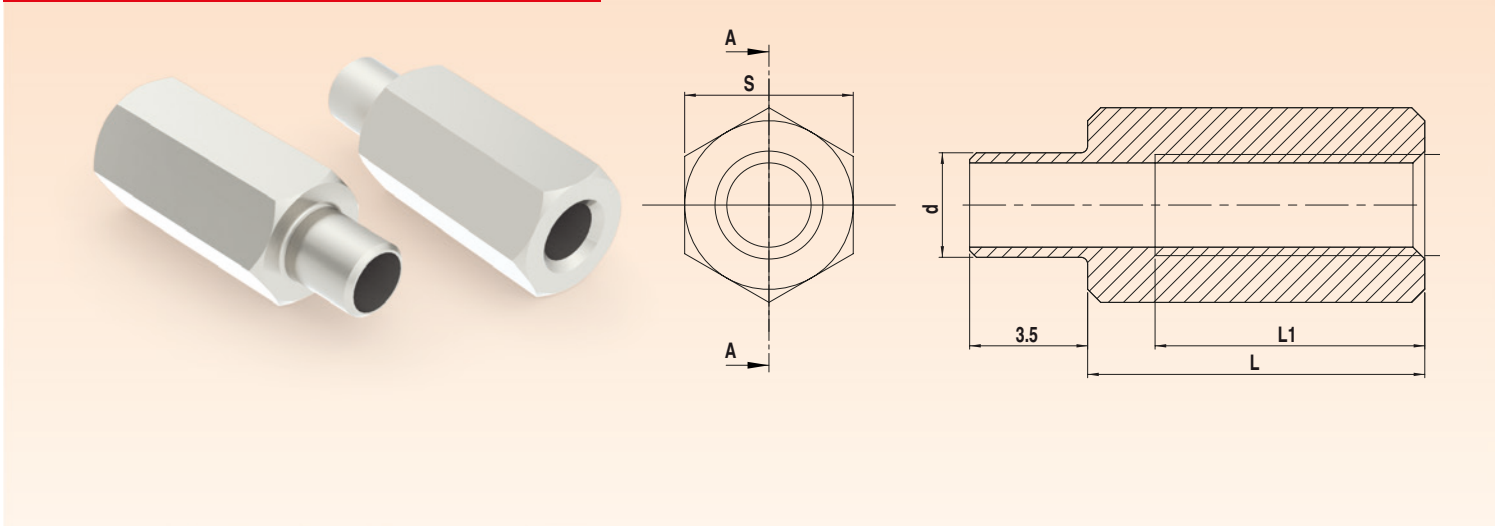
Code	L1	L2	L3	Pack	Code	L1	L2	L3	Pack
YP-4405	5	4,5	3,5	50	YP-4416	5	11	8	50
YP-4406	6	5,5	5	50	YP-4417	6	11	8	50
YP-4407	7	6,5	6	50	YP-4418	7	11	8	50
YP-4408	8	7,5	7	50	YP-4419	8	11	8	50
YP-4409	9	8,5	7,5	50	YP-4420	9	11	8	50
YP-4410	10	9,5	8	50	YP-4421	10	11	8	50
YP-4411	11	10	8	50	YP-4422	11	11	8	50
YP-4412	12	11	8	50	YP-4423	12	11	8	50
YP-4413	5	11	8	50	YP-4424	5	11	8	50
YP-4414	6	11	8	50	YP-4425	6	11	8	50
YP-4415	7	11	8	50					

MALE M2.5-FEMALE M3 BRASS SPACERS



Code	L1	L2	L3	Pack	Code	L1	L2	L3	Pack
YP-3504	4	3,5	3	50	YP-3513	13	12	8	50
YP-3505	5	4,5	3,5	50	YP-3514	14	12	8	50
YP-3506	6	5,5	4	50	YP-3515	15	12	8	50
YP-3507	7	6,5	5	50	YP-3516	16	12	8	50
YP-3508	8	7,5	6	50	YP-3517	17	12	8	50
YP-3509	9	8,5	7,5	50	YP-3518	18	12	8	50
YP-3510	10	9,5	8	50	YP-3519	19	12	8	50
YP-3511	11	10	8	50	YP-3520	20	12	8	50
YP-3512	12	11	8	50					

SPACERS SOLDERED TO PCB



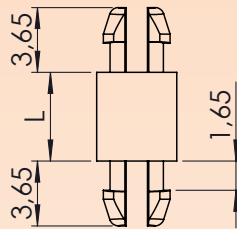
- TIN-COATED SOLDERABLE
- CONNECTED TO THE PCB CARD BY SOLDERING
- CAN BE USED FOR MECHANICAL AND ELECTRICAL CONNECTION

Code	L	L1	d	S	Code	L	L1	d	S
YP-035-5	5	8	3,1	5	YP-035-11	11	8	3,1	5
YP-035-6	6	8	3,1	5	YP-035-12	12	8	3,1	5
YP-035-7	7	8	3,1	5	YP-035-13	13	8	3,1	5
YP-035-8	8	8	3,1	5	YP-035-14	14	8	3,1	5
YP-035-9	9	8	3,1	5	YP-035-15	15	8	3,1	5
YP-035-10	10	8	3,1	5					

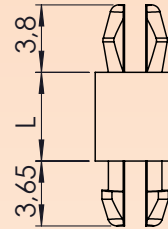
INTERLACED SPACERS



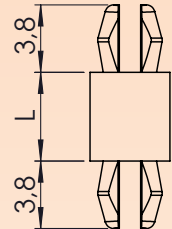
Top / Bottom Hole Dia 3,20 mm
Panel Thickness 1,60 mm



Type A
YP-1132-xx
Double side locked spacer



Type B
YP-1232-xx
One side locked spacer



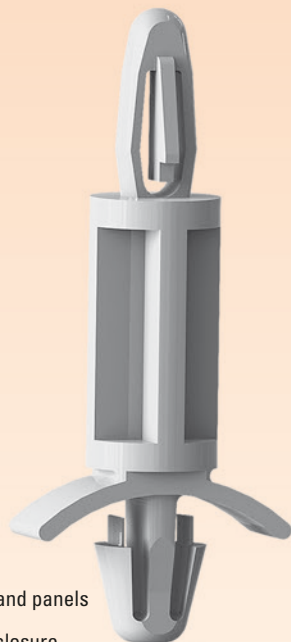
Type C
YP-1332-xx
Double side lockless spacer

Material	PA6 GF15 UL94 V2
Color	Natural
Top / Bottom Panel Thickness	min : 1,57 mm max : 1,65 mm
Top / Bottom Hole Dia	3,20 mm

Code	H (mm)	Top / Bottom Hole Dia (mm)	Panel Thickness(mm)	Type
YP-1132-05	5	3,20	1,60	A
YP-1132-10	10	3,20	1,60	A
YP-1132-15	15	3,20	1,60	A
YP-1132-20	20	3,20	1,60	A
YP-1232-05	5	3,20	1,60	B
YP-1232-10	10	3,20	1,60	B
YP-1232-15	15	3,20	1,60	B
YP-1232-20	20	3,20	1,60	B
YP-1332-05	5	3,20	1,60	C
YP-1332-10	10	3,20	1,60	C
YP-1332-15	15	3,20	1,60	C
YP-1332-20	20	3,20	1,60	C

PLASTIC STRINGED DISTANCES

MATERIAL PA 66
COLOR NATURAL



- Easy mounting in sheet metal enclosures and panels
- Fastens the mounting
- Electrically insulates the PCB from the enclosure
- PCB can be easily detached by special lock mechanism

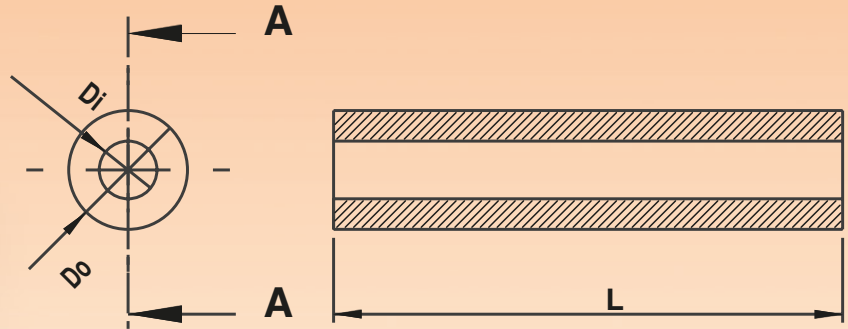
Upper Hole : 4 ± 0.08 mm
Panel Thickness: 2 mm max.



Bottom Hole : 4.75 ± 0.08
Sheet Thickness : 0,8 - 2,0 mm

Code	B mm
YP-805	4,75
YP-810	9,53
YP-816	15,9
YP-822	22,2

PLASTIC SPACERS

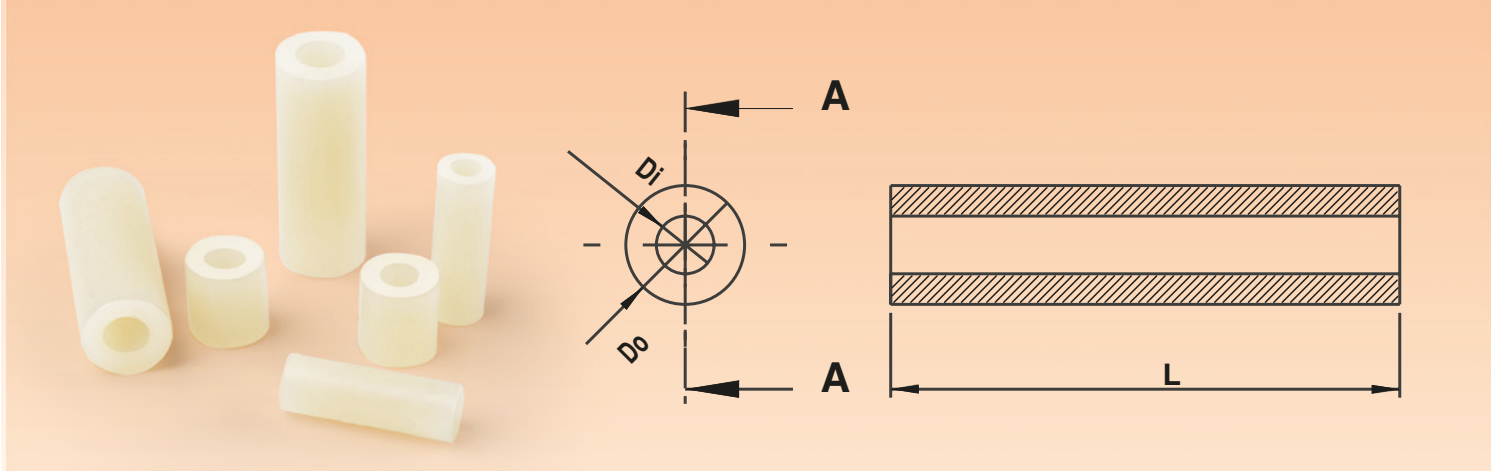


Code	Material	Di	Do	L
YP-605	PA6	2,5	5	5
YP-606	PA6	2,5	5	6
YP-607	PA6	2,5	5	7
YP-608	PA6	2,5	5	8
YP-609	PA6	2,5	5	9
YP-610	PA6	2,5	5	10
YP-611	PA6	2,5	5	11
YP-612	PA6	2,5	5	12
YP-613	PA6	2,5	5	13
YP-614	PA6	2,5	5	14
YP-615	PA6	2,5	5	15
YP-616	PA6	2,5	5	16
YP-617	PA6	2,5	5	17
YP-618	PA6	2,5	5	18
YP-619	PA6	2,5	5	19
YP-620	PA6	2,5	5	20
YP-621	PA6	2,5	5	21
YP-622	PA6	2,5	5	22
YP-623	PA6	2,5	5	23
YP-624	PA6	2,5	5	24
YP-625	PA6	2,5	5	25
YP-630	PA6	2,5	5	30
YP-635	PA6	2,5	5	35
YP-640	PA6	2,5	5	40
YP-645	PA6	2,5	5	45
YP-650	PA6	2,5	5	50

Code	Material	Di	Do	L
YP-701	PA6	3	7	1
YP-702	PA6	3	7	2
YP-703	PA6	3	7	3
YP-704	PA6	3	7	4
YP-705	PA6	3	7	5
YP-706	PA6	3	7	6
YP-708	PA6	3	7	8
YP-710	PA6	3	7	10
YP-712	PA6	3	7	12
YP-715	PA6	3	7	15
YP-720	PA6	3	7	20
YP-725	PA6	3	7	25
YP-730	PA6	3	7	30
YP-735	PA6	3	7	35
YP-740	PA6	3	7	40
YP-745	PA6	3	7	45
YP-750	PA6	3	7	50

Code	Material	Di	Do	L
YP-905	PA6	4,2	8	5
YP-906	PA6	4,2	8	6
YP-907	PA6	4,2	8	7
YP-908	PA6	4,2	8	8
YP-909	PA6	4,2	8	9
YP-910	PA6	4,2	8	10
YP-911	PA6	4,2	8	11
YP-912	PA6	4,2	8	12
YP-913	PA6	4,2	8	13
YP-914	PA6	4,2	8	14
YP-915	PA6	4,2	8	15
YP-916	PA6	4,2	8	16
YP-917	PA6	4,2	8	17
YP-918	PA6	4,2	8	18
YP-919	PA6	4,2	8	19
YP-920	PA6	4,2	8	20
YP-921	PA6	4,2	8	21
YP-922	PA6	4,2	8	22
YP-923	PA6	4,2	8	23
YP-924	PA6	4,2	8	24
YP-925	PA6	4,2	8	25
YP-930	PA6	4,2	8	30
YP-935	PA6	4,2	8	35
YP-940	PA6	4,2	8	40
YP-945	PA6	4,2	8	45
YP-950	PA6	4,2	8	50

PLASTIC SPACERS



Code	Material	Di	Do	L	Code	Material	Di	Do	L	Code	Material	Di	Do	L
YP-5705	PA6	5,3	8	5	YP-6705	PA6	6,3	10	5	YP-8705	PA6	8,3	12	5
YP-5706	PA6	5,3	8	6	YP-6706	PA6	6,3	10	6	YP-8706	PA6	8,3	12	6
YP-5707	PA6	5,3	8	7	YP-6707	PA6	6,3	10	7	YP-8707	PA6	8,3	12	7
YP-5708	PA6	5,3	8	8	YP-6708	PA6	6,3	10	8	YP-8708	PA6	8,3	12	8
YP-5709	PA6	5,3	8	9	YP-6709	PA6	6,3	10	9	YP-8709	PA6	8,3	12	9
YP-5710	PA6	5,3	8	10	YP-6710	PA6	6,3	10	10	YP-8710	PA6	8,3	12	10
YP-5711	PA6	5,3	8	11	YP-6711	PA6	6,3	10	11	YP-8711	PA6	8,3	12	11
YP-5712	PA6	5,3	8	12	YP-6712	PA6	6,3	10	12	YP-8712	PA6	8,3	12	12
YP-5713	PA6	5,3	8	13	YP-6713	PA6	6,3	10	13	YP-8713	PA6	8,3	12	13
YP-5714	PA6	5,3	8	14	YP-6714	PA6	6,3	10	14	YP-8714	PA6	8,3	12	14
YP-5715	PA6	5,3	8	15	YP-6715	PA6	6,3	10	15	YP-8715	PA6	8,3	12	15
YP-5716	PA6	5,3	8	16	YP-6716	PA6	6,3	10	16	YP-8716	PA6	8,3	12	16
YP-5717	PA6	5,3	8	17	YP-6717	PA6	6,3	10	17	YP-8717	PA6	8,3	12	17
YP-5718	PA6	5,3	8	18	YP-6718	PA6	6,3	10	18	YP-8718	PA6	8,3	12	18
YP-5719	PA6	5,3	8	19	YP-6719	PA6	6,3	10	19	YP-8719	PA6	8,3	12	19
YP-5720	PA6	5,3	8	20	YP-6720	PA6	6,3	10	20	YP-8720	PA6	8,3	12	20
YP-5721	PA6	5,3	8	21	YP-6721	PA6	6,3	10	21	YP-8721	PA6	8,3	12	21
YP-5722	PA6	5,3	8	22	YP-6722	PA6	6,3	10	22	YP-8722	PA6	8,3	12	22
YP-5723	PA6	5,3	8	23	YP-6723	PA6	6,3	10	23	YP-8723	PA6	8,3	12	23
YP-5724	PA6	5,3	8	24	YP-6724	PA6	6,3	10	24	YP-8724	PA6	8,3	12	24
YP-5725	PA6	5,3	8	25	YP-6725	PA6	6,3	10	25	YP-8725	PA6	8,3	12	25
YP-5730	PA6	5,3	8	30	YP-6730	PA6	6,3	10	30	YP-8730	PA6	8,3	12	30
YP-5735	PA6	5,3	8	35	YP-6735	PA6	6,3	10	35	YP-8735	PA6	8,3	12	35
YP-5740	PA6	5,3	8	40	YP-6740	PA6	6,3	10	40	YP-8740	PA6	8,3	12	40
YP-5745	PA6	5,3	8	45	YP-6745	PA6	6,3	10	45	YP-8745	PA6	8,3	12	45
YP-5750	PA6	5,3	8	50	YP-6750	PA6	6,3	10	50	YP-8750	PA6	8,3	12	50